



GAMMA TECH

MANURE COMPOST TURNER

GAMMA TECH

First Grade Manure Compost Turner Supplier from China

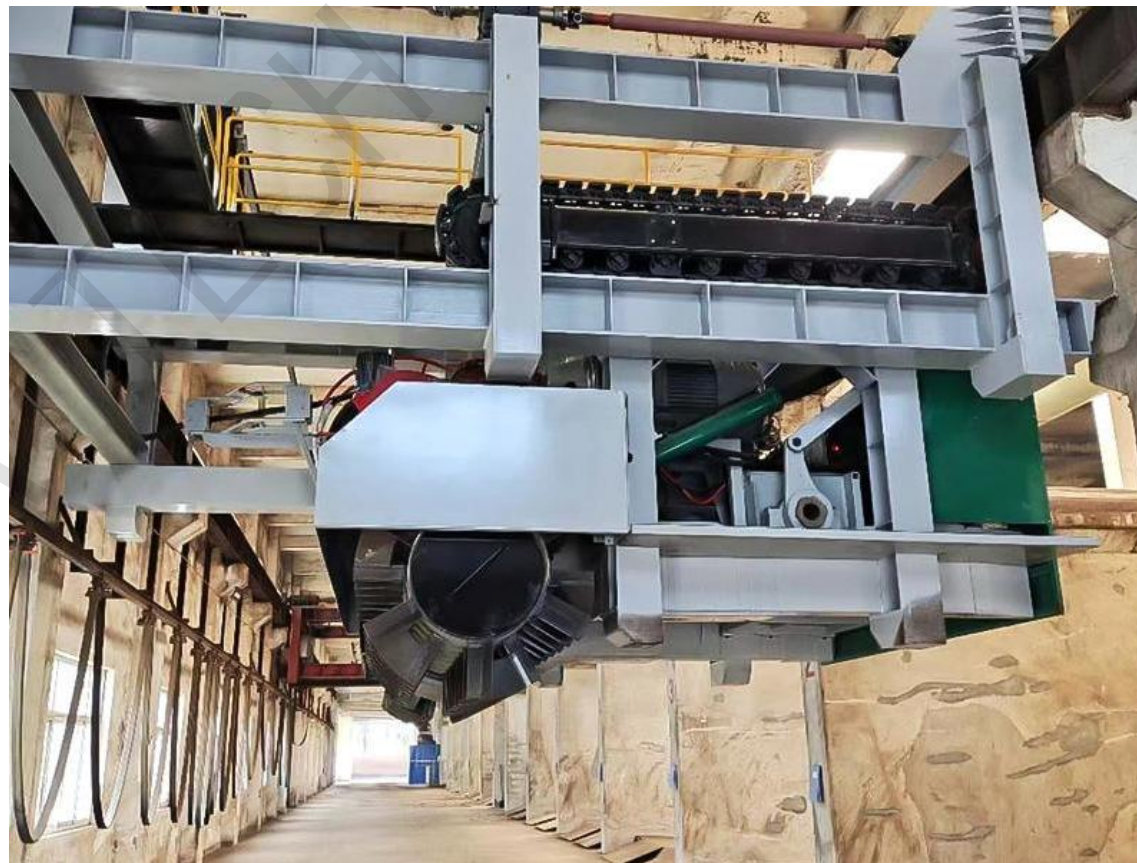
Email: info@gammaagri.com Wechat/whatsapp+8615150838410



GAMMA TECH



CRAWLER COMPOST TURNER



GROOVE TYPE COMPOST TURNER

MODEL:FD300



Engine data:

Brand: Dongfeng Cummins 6BT5.9-C(150/180)

Number of cylinders: 6

Cylinder volume: 5.9L

Standard power: 110kw-230r/min

Maximum torque: 475N.m

Minimum fuel consumption: about 217g/kg.h

Battery: 24V

Working data:

Maximum allowable width of accumulation: 3.1 m

Maximum allowable height of accumulation: 1.6 m

Accumulation at 45° Angle cross-sectional area: 2.5 square meters

Track width: 2* 0.3m

Minimum distance between deposits: 0.6 m

Maximum diameter of allowable accumulation particles: 250mm

Working longitudinal flipping distance: 2-3 meters

Maximum processing capacity: 1000~1200m³

Turning radius: 2000mm

Forward (backward) speed: 0~10 m /min

Equipment specifications:

Roller diameter: 830mm

Allowable ground height difference: 20~250mm

Width of inner door of heap turning machine: 2700mm

Height of inner door of heap turning machine: 1600mm

Overturning length: 2450mm

Width of heap turning machine: 4000mm

Heap turning machine height: 3400 (transport 2400) mm

Track gauge: 2900mm

Heap turning machine weight: about 6000kg

Surface pressure: about 0.5kg/cm³



GAMMA TECH

MODEL:FD350



Engine data:

Brand: Dongfeng Cummins 6BT5.9-C215
Number of cylinders: 6
Cylinder volume: 5.9L
Standard power: 132kw-220r/min
Maximum torque: 575N.m
Minimum fuel consumption: about 206g/kg.h
Battery: 24V

Working data:

Maximum allowable width of accumulation: 3.6 m
Maximum allowable height of accumulation: 1.8 m
Accumulation at 45° Angle cross-sectional area: 3.3 square meters
Track width: 2* 0.33m
Minimum distance between deposits: 0.6 m
Maximum diameter of allowable accumulation particles: 250mm
Working longitudinal flipping distance: 2-3 meters
Maximum processing capacity: 1200~1500m³
Turning radius: 2000mm
Forward (backward) speed: 0~10 m /min

Equipment specifications:

Roller diameter: 830mm
Allowable ground height difference: 20~250mm
Width of inner door of heap turning machine: 3200mm
Height of inner door of heap turning machine: 1800mm
Overturning length: 2500mm
Width of heap turning machine: 4500mm
Stacking machine height: 3500 (transport 3300) mm
Track gauge: 3400mm
Heap turning machine weight: approx. 7500kg
Surface pressure: about 0.5kg/cm³



GAMMA TECH

MODEL:FD400



Engine data:

Brand: Dongfeng Cummins 6BT5.9-C240
Number of cylinders: 6
Cylinder volume: 5.9L
Standard power: 194kw-220r/min
Maximum torque: 842N.m
Minimum fuel consumption rate: about 207g/kg.h
Battery: 24V

Working data:

Maximum allowable width of accumulation: 4.2 m
Maximum allowable height of accumulation: 1.9 m
Accumulated material at 45° Angle cross-sectional area: 4.1 square meter
Track width: 2* 0.3m
Minimum distance between deposits: 0.6 m
Maximum diameter of allowable accumulation particles: 250mm
Working longitudinal flipping distance: 2-3 meters
Maximum processing capacity: 1600~2000m³
Turning radius: 2500mm
Forward (backward) speed: 0~10 m /min

Equipment specifications:

Roller diameter: 830mm
Allowable ground height difference: 20~250mm
Width of inner door of heap turning machine: 3600mm
Height of inner door of heap turning machine: 1900mm
Overturning length: 2900mm
Width of heap turning machine: 5000mm
Height of heap turning machine: 3800 (transport 3000) mm
Track gauge: 3800mm
Heaps turning machine weight: approx. 8500kg
Surface pressure: about 0.5kg/cm³



GAMMA TECH

MODEL:FD450



Engine data:

Brand: Dongfeng Cummins 6BT5.9-C260
Number of cylinders: 6
Cylinder volume: 5.9L
Standard power: 194kw-220r/min
Maximum torque: 842N.m
Minimum fuel consumption rate: about 207g/kg.h
Battery: 24V

Working data:

Maximum allowable width of accumulation: 4.6 m
Maximum allowable height of accumulation: 1.9 m
Accumulation at 45° Angle cross-sectional area: 4.2 square meters
Track width: 2* 0.33m
Minimum distance between deposits: 0.6 m
Maximum diameter of allowable accumulation particles: 250mm
Working longitudinal flipping distance: 2-3 meters
Maximum processing capacity: 1800~2200m³
Turning radius: 2750mm
Forward (backward) speed: 0~10 m /min

Equipment specifications:

Roller diameter: 830mm
Allowable ground height difference: 20~250mm
Width of inner door of heap turning machine: 4000mm
Height of inner door of heap turning machine: 2200mm
Overturning length: 2900mm
Width of heap turning machine: 5500mm
Height of heap turning machine: 3800 (transport 3000) mm
Track gauge: 4300mm
Heap turning machine weight: approx. 9000kg
Surface pressure: about 0.5kg/cm³



GAMMA TECH

MODEL:FD500



Engine data:

Brand: Dongfeng Cummins 6BT5.9-C260
Number of cylinders: 6
Cylinder volume: 8.3L
Standard power: 194kw-220r/min
Maximum torque: 1100N.m
Minimum fuel consumption: about 190g/kg.h
Battery: 24V

Working data:

Maximum allowable width of accumulation: 5.1 m
Maximum allowable height of accumulation: 2.2 m
Accumulation at 45° Angle cross-sectional area: 5.8 square meters
Track width: 2* 0.33m
Minimum distance between deposits: 0.6 m
Maximum diameter of allowable accumulation particles: 350mm
Working longitudinal flipping distance: 2-3 meters
Maximum processing capacity: 2500~2800m³
Turning radius: 3000mm
Forward (backward) speed: 0~10 m /min

Equipment specifications:

Roller diameter: 1020mm
Allowable ground height difference: 20~250mm
Width of inner door of heap turning machine: 4600mm
Height of inner door of heap turning machine: 2200mm
Overturning length: 2900mm
Width of heap turning machine: 6000mm
Height of heap turning machine: 3900 (transport 3300) mm
Track gauge: 4800mm
Heaps turning machine weight: approx. 10500kg
Pressure against the surface: about 0.6kg/cm³



GAMMA TECH

groove type turner can be customized



thanks for your time
pls kindly contact us below :

Email: info@gammaagri.com

Mobile: +8615150838410

wechat/whatsapp : +8615150838410